

## 9400 series

### Power Relay 1-pole, 8-12 FLA AC or DC Coil

**UL** File E75492

Users should thoroughly review the technical data before selecting a product part number. It is recommended that users also seek out the pertinent approvals files of the agencies/laboratories and review them to ensure the product meets the requirements for a given application.

#### Features

- Single-pole relay used extensively in HVAC applications.
- Multi-positional mounting without affecting operation.
- Convenient 0.250" (6.35 mm) quick connect terminals.

#### Contact Data @ 25°C

**Arrangements:** 1 Form X (SPST-NO-DM), 1 Form Y (SPST-NC-DB),  
1 Form Z (SPDT-DM-DB) & 1 Form Z (SPDT-DM-DB)  
jumped to wire as 1 Form C (SPDT).

**Materials:** Silver Alloy and Fine Silver.

#### Maximum Ratings:

##### Silver Alloy (Power) Contacts

All Forms: 12 FLA, 60 LRA @ 125VAC;  
18A @ 125VAC, resistive;  
8 FLA, 48 LRA @ 240/277VAC;  
18A @ 240/277VAC, resistive.

1 Form X only: 25A @ 240/277VAC, resistive.

##### Fine Silver (Pilot) Contacts

All Forms: 3A, 277VAC;  
125VA @ 125VAC;  
250VA @ 250VAC;  
277VA @ 277VAC;

**Expected Life:** 1 million ops., mechanical.  
250,000 ops., at rated resistive load.  
100,000 ops., at rated inductive load.

#### Initial Dielectric Strength

**Initial Breakdown Voltage:** 1,554 VAC between live parts and exposed non-current carrying metal parts.

#### Coil Data @ 25°C

**Voltage:** 12 & 24 VDC; 6-277 VAC, 50/60 Hz.

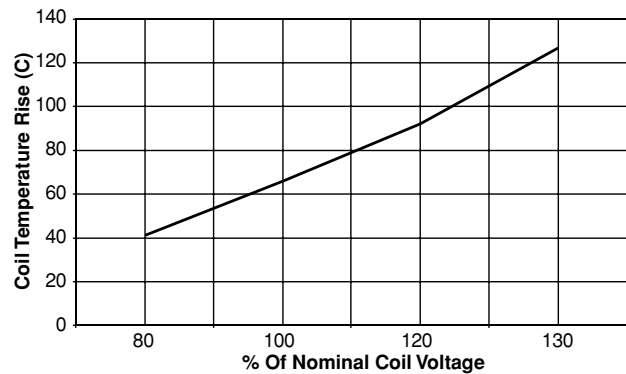
**Max. Sealed Power:** 4 VA (AC coils.); 3 W (DC coils).

**Nominal Inrush Power:** 5 VA (AC coils.); 3 W (DC coils).

**Insulation Class:** UL Class B (130°C).

**Duty Cycle:** Continuous.

#### Coil Temperature Rise Above Ambient



#### Operate Data @ 25°C

**Must Operate Voltage:** Approximately 85% of AC nominal coil voltage.  
Approximately 75% of DC nominal coil voltage.

#### Environmental Data

**Temperature Range:** Storage and Operating: -40°C – +65°C.

#### Mechanical Data

**Termination:** 0.250" (6.35 mm) quick connects, standard. Consult factory for availability of optional 0.187" (4.75 mm) quick connects.

**Weight:** 2.88 oz. (82 g) approximately

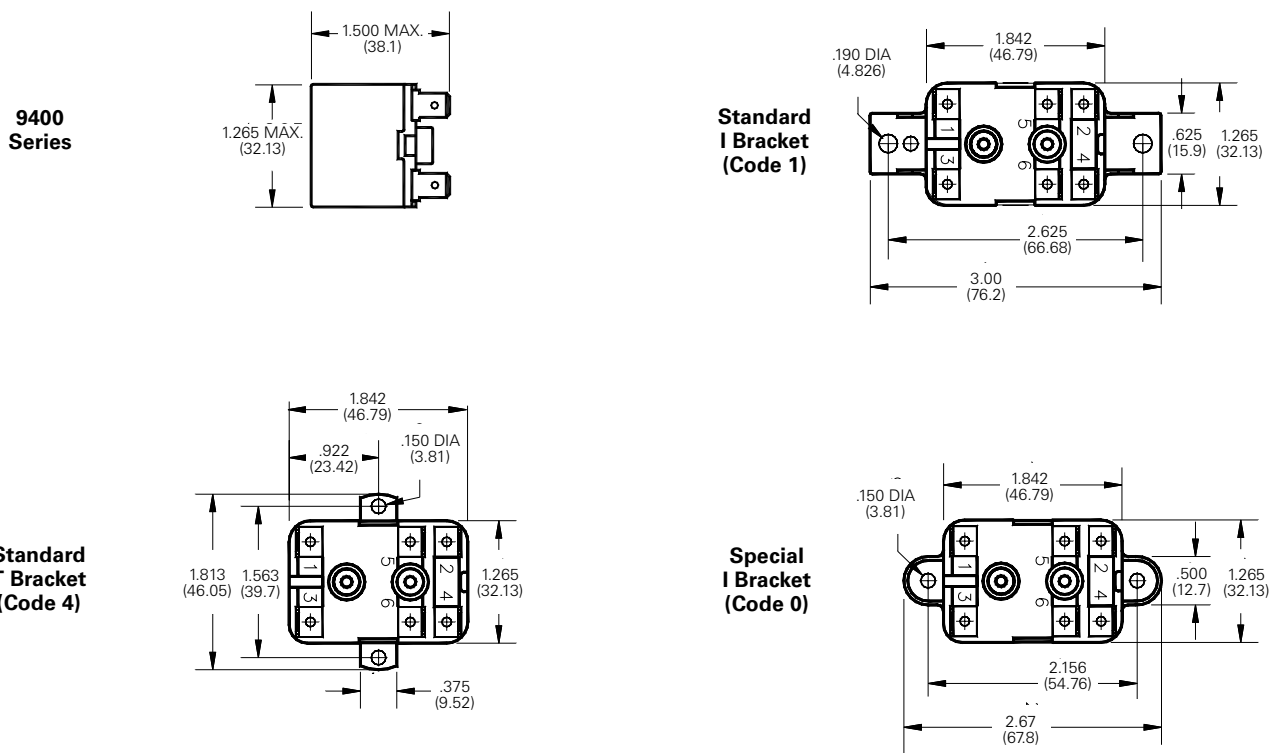
Ordering Information

<b>Typical Part No. ▶</b>	<b>9400</b>	<b>-0</b>	<b>3</b>	<b>Q</b>	<b>1</b>	<b>999</b>
<p><b>1. Series:</b> 9400 = 1- pole, 8-12 FLA relay</p> <p><b>2. Mounting Bracket:</b> 1 = Standard I Bracket with mounting holes on 2.625" (66.67mm) centers 4 = Standard T Bracket with mounting holes on 1.563" (39.70mm) centers 0 = Special I Bracket with mounting holes on 2.156" (54.76mm) centers</p> <p><b>3. Pole Configuration:</b> 1 = 1 Form X (SPST-NO-DM)      3 = 1 Form Z (SPDT-DM/DB) 2 = 1 Form Y (SPST-NC-DB)      4 = 1 Form Z (SPDT-DM/DB) jumpered to wire as 1 Form C.</p> <p><b>4. Coil Voltage (50/60 Hz.):</b> B = 12VDC      Y = 6VAC      P = 100VAC      S = 200VAC      V = 277VAC C = 24VDC      Q = 24VAC      T = 120VAC      U = 208/240VAC      QS = 24VAC, low VA</p> <p><b>5. Contact Type:</b> 1 = Silver alloy power contacts 2 = Fine silver pilot contacts</p> <p><b>6. Customer ID Suffix:</b> 999 = Standard Model      000-998 = Factory assigned customer ID</p>						

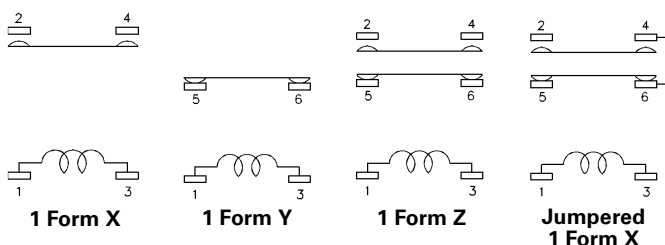
Standard part numbers listed below are more likely to be available from stock.

9400-03Q1999      9400-03T1999      9400-03U1999      9400-04Q1999      9400-04T1999      9400-04U1999

Outline Dimensions



Contact Configurations



Dimensions are shown for reference purposes only.

Dimensions are in inches over (millimeters) unless otherwise specified.

Specifications and availability subject to change.

www.tycoelectronics.com  
 Technical support:  
 Refer to inside back cover.